



TECHNICAL DATA SHEET

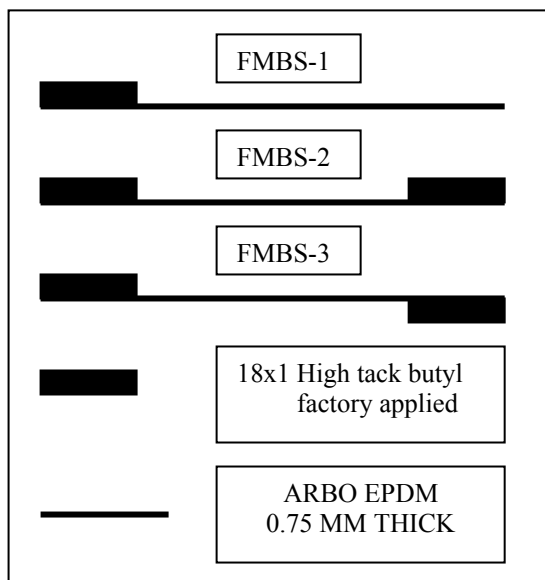
ARBO EPDM FACADE MEMBRANE BS-1 BS-2 BS-3



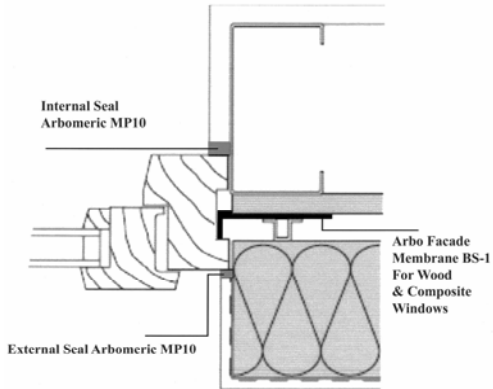
Description

Arbo EPDM façade membrane BS-1 uses Arbo façade membrane with the addition of butyl strip for easy and clean application to timber and composite frames.

Arbo façade membrane BS-1 can be supplied with butyl strip to both edges if required. This is called Arbo façade membrane BS-2. Arbo BS-3 has butyl applied to opposite faces, see diagram below.



Available in 0.75 mm thickness, 25 metre length rolls.
Width – 100mm to 300mm in 50mm increments.



APPLICATION METHOD

Application sequence is; cill, jambs, head.

All surfaces must be clean, dry and in sound condition.

The butyl strip will adhere to metals and most plastics. Coarse porous surfaces may require a primer and a terminator strip.

Alternatively, to adhere to porous building substrates without a terminator strip use Arbo Membrane Adhesive. The area of adhesive contact should be approximately 100 mm wide. Porous surfaces should be primed with AFS primer to most smooth porous surfaces such as cementitious boards. Arbo 2650 Primer is preferred on coarse porous surfaces such as brick and block work. Site adhesion tests are recommended or contact technical services for further information.

Use a roller to improve contact between substrates and membrane to eliminate air pockets.

Lap and patch corners where necessary.

Any holes or gaps in corners can be sealed with further application of Arbo Membrane Adhesive.

We recommend that edges of membrane are over sealed to the substrate with Arbo Membrane Adhesive when sealing to block and brick work with adhesive.

It is advisable not to apply when surfaces are below 5 degrees Centigrade especially in damp and frosty conditions.

Laboratory experiments have shown that where some porous substrates, for example, fibre boards, become damp the adhesion of Arbo Membrane Adhesive can be improved by drying the surface with a cloth. Apply one coat of 2650 primer and allow to dry before application of adhesive.

Site trials are always recommended to check adhesion before work commences. Terminator strips are recommended when applying in deep laps at head and cill.

Contact our technical department for further advice.

Minimum recommended lap to window 18 mm

Minimum recommended lap to substrate 100 mm (when using Membrane Adhesive).

The EPDM membrane should not be stretched or subjected to stress when applied across a void. Care should be taken not to place the adhesive bond under long term continuous strain or stress. (i.e. do not stretch the EPDM sheet between the bonded areas) Allow excess material across the void between window and substrate.

TECHNICAL INFORMATION

Tensile Strength	EN 12311-2B	≥ 9 N/mm ²
Elongation	EN 12311-2B	≥ 400
Modulus 300% (Mpa)	EN 12311-2B	≥ 6 N/mm ²
Hardness (Shore A)		50-70
Tear strength (KN/m)		≥ 35
Low temperature flexibility	EN 495-5	-70 C
Water vapour permeability		40,000 μ
Reaction to fire	EN13501-1	Class E
Water tightness	EN1928	Pass
Durability (heat ageing)	EN 1928	Pass
Durability (alkali)	EN 12113-2	Pass
Ozone		Resistant
UV		Resistant
Life Expectancy	Based on SKZ 2001 study	50 years

Important: The information in this leaflet is given in good faith and based on results gained from experience and tests. However, all recommendations or suggestions are made without guarantee since the conditions of use and design are beyond our control. Goods are supplied subject to the Company's terms and conditions of sales, a copy of which is available on request.

Arbo sealants are manufactured in the U.K. by:

Adshead Ratcliffe & Co Ltd, Derby Road, Belper, Derbyshire DE56 1WJ, England.

Telephone: 01773 826661

Fax: 01773 821215

Internet: www.arbo.co.uk

First Issue: 09.12.11

2/2