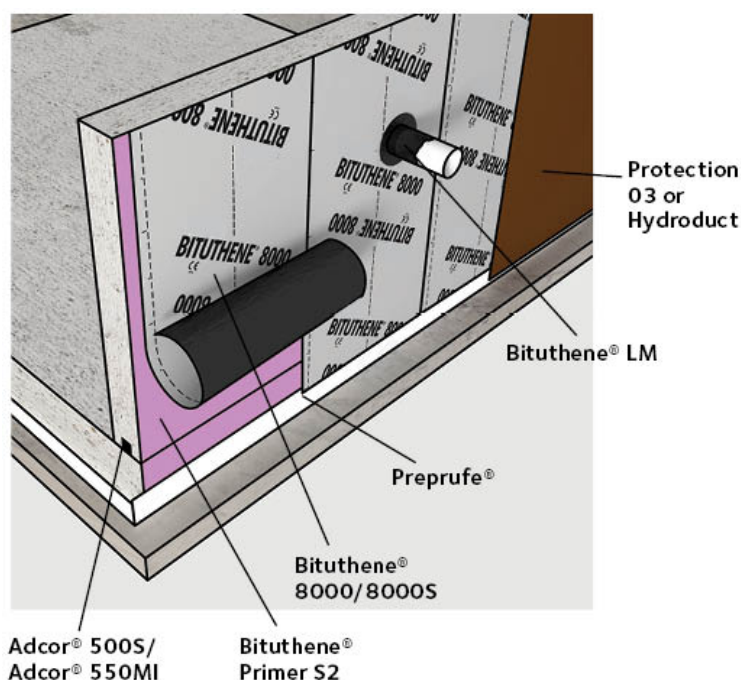


BITUTHENE® 8000 / 8000S membranes

Advanced, self-adhesive membrane with unique HDPE composite film that provides superior physical properties for water and vapour proof application in sub-structures

Product Description

BITUTHENE® 8000/8000S membranes combines the proven BITUTHENE® adhesive technology with a unique, grey coloured carrier film to provide superior performance and easier installation. BITUTHENE® 8000/ 8000S membranes is extremely tough but any accidental damage which would otherwise be missed, is made visible by the black compound showing through the light grey film.



Details shown are typical illustrations only and not working drawings. For assistance with working drawings and additional technical advice please contact GCP Technical Services.

Advantages

- **Water and vapour proof** – provides protection for all basements, BS 8102:2009
- **Gas resistance** – BITUTHENE® 8000 and 8000S membranes are certified by BBA to score 2 points as a gas resistant barrier (see BS 8485:2015, Table 7) and additional 2.5 points as a structural barrier in Grade 3 basements (BS 8485:2015, Table 5).
- **Chemically resistant** – provides effective external protection against aggressive soils, contaminated ground water and hydrocarbons in suspension
- **Superior performance** – 70 m hydrostatic pressure resistance with ultra low moisture transmission rate
- **Wide application “window” reduces delays** – application temperature range from -5°C to +35°C and damp surface tolerant
- **Unique composite film** – engineered for strength, flexibility and a smooth finish
- **Facilitates quality assured installation** – printed overlap line ensures minimum laps; light grey colour highlights accidental damage for simple patch repairs.
- **System Compatibility** – can be combined with PREPRUFE® pre-applied membranes, BITUTHENE® LM, and HYDRODUCT® for system solutions.



Installation

At air temperatures below +5 °C measures should be taken to ensure that all surfaces are free from ice or frost. All surfaces except those below ground bearing slabs and PREPRUFE® R membranes should be primed with one coat of GCP's solvent based quick drying, damp and green concrete tolerant, rubberised primer Bituthene® Primer S2. Primer S2 can be applied by brush or roller. Primer S2 is pink in colour to ensure proper coverage, to aid identification and to avoid substitution of proper recommended primer.

BITUTHENE® 8000/ 8000S membranes shall be laid by peeling back the protective release paper and applying the adhesive face onto the prepared surface, free from ice, frost or condensation. BITUTHENE® LM to be applied at all internal and external corners, penetrations etc. prior to applying the overall membrane.

Adjacent rolls are aligned using printed lines and overlapped 50 mm minimum at side and ends and well rolled with a firm pressure, using a lap roller to ensure complete adhesion and continuity between the layers. On high walls it may be necessary to batten fix the membrane to prevent slippage. Once the membrane is applied, cover with a protection board as soon as possible. On “green” concrete or damp surfaces, cover the membrane immediately.

Repairs, Protection & Drainage

- Damaged areas to be repaired with an oversize patch applied to a clean dry surface extending 100 mm beyond damage and firmly rolled.
- Protect BITUTHENE® membranes immediately after application to avoid damage from other trades, construction materials or backfill, using only Protection 03 boards.
- If the area around the substructure can be drained to a low level outlet then GCP recommends the HYDRODUCT® range of drainage membranes.

Performance

BITUTHENE® 8000/ 8000S membranes complies with the following national standards: BS 8102: 2009, The Building Regulations (as amended) (England and Wales) 2000, The Building Regulations (Northern Ireland) 2000 (as amended), Building Standards (Scotland) Regulations 2004 (as amended).

Health and Safety

There is no legal requirement for a Safety Data Sheet (SDS) for ADCOR® 500S, ADCOR® 550MI, BITUTHENE® 8000/8000S, Protection 03 board, BITUSTIK™ 4000 or HYDRODUCT®. For BITUTHENE® Primer S2 and BITUTHENE® LM read the product label and SDS before use. Users must comply with all risk and safety phrases. SDS's can be obtained from GCP Applied Technologies or from our web site at gcpat.com.

Specification Clause

Refer to NBS Clause 180 and 190.

DECLARED VALUES ACCORDING TO EN 13967

PROPERTY	DECLARED VALUE		TEST METHOD	PROPERTY	DECLARED VALUE		TEST METHOD
BITUTHENE®	8000	8000S	Method	BITUTHENE®	8000	8000S	
Visible defects - MDV	None	None	EN 1850-2	Joint strength (N/50mm) - MLV	≥ 190	≥ 190	EN 12317-2
Straightness - MDV	Pass	Pass	EN 1848-2	Water vapour transmission (μ= sD/d) - MDV	105.000 ± 30%	105.000 ± 30%	EN 1931 Method B
Length (m) - MDV	20.15 ± 0.15	20.15 ± 0.15	EN 1848-2	Durability of water tightness against ageing/degradation (at 60 kPa)	Pass	Pass	EN 1296 EN 1928 Method B

Thickness (mm) – MDV	1.52 ± 0.08	1.52 ± 0.08	EN 1849-2	Durability of water tightness against chemicals (at 60 kPa)	Pass	Pass	EN 1847 Method B EN 1928 Method B
Width Carrier Sheet (m) – MDV	0.987 ± 0.007	0.987 ± 0.007	EN 1848-2	Durability of tensile properties against chemicals	Pass	Pass	EN13967 Annex C
Width Overall (roll) (m) – MDV	1.000 ± 0.010	1.000 ± 0.010	EN 1848-2	Compatibility with bitumen	Pass	Pass	EN 1548
Mass per unit area (g/m ²) – MDV	1490 ± 90	1550 ± 90	EN 1849-2	Resistance to static loading	≥ 20 – Pass	≥ 20 – Pass	EN 12730
Water tightness to liquid water (at 60 kPa)	Pass	Pass	EN 1928	Tensile properties – unreinforced sheets (N/50mm) – MLV	Long ¹ ≥ 180 Trans ² ≥ 180	Long ¹ ≥ 180 Trans ² ≥ 180	EN 12311-2 Method A
Resistance to impact (Al-board (mm) – MLV)	≥ 150	≥ 150	EN 12691	Tensile properties – unreinforced sheets (Elongation %) – MLV	Long ¹ ≥ 5 Trans ² ≥ 5	Long ¹ ≥ 5 Trans ² ≥ 5	EN 12311-2 Method A
Resistance to tearing (Nail Shank)- unreinforced sheets (N) – MLV	≥ 100	≥ 100	EN 12310-1	Reaction to fire (Class; test conditions)	E	E	EN 13501-1

Footnotes:

1. Longitudinal – related to the roll direction
2. Transversal – related to the roll direction
3. MDV: Manufacturer Declared Value
4. MLV: Manufactured Limiting Value
5. NPD: No Performance Declared.

All declared values shown in this data sheet are based on test results determined under laboratory conditions and with the product sample taken directly from stock in its original packing without any alteration or modification of its component parts.

	GCP Applied Technologies (UK) Ltd. Ipswich Road, Slough, Berkshire, SL1 4EQ United Kingdom 06 09/FO17	
	EN 13967 Bituthene® 8000/8000S Flexible Sheets for Waterproofing, Type T to fire: E Watertightness: Pass at 60 kPa	Reaction

SUPPLY

BITUTHENE® 8000/8000S	1 m x 20 m roll (20 sq m)
	Weight 36 kg
Storage	Store upright in dry conditions below +30 °C
BITUTHENE® Primer S2	5 & 25 litre can
Coverage	9-11 sq m per litre application, (depending on surface porosity and ambient temperature)
Ancillary Products	
BITUTHENE® LM	5.7 litre packs
Protection 03 board	3 mm x 0.9 m x 2.03 m (± 6%)
ADCOR® 500S	6 x 5 m rolls
ADCOR® 550MI	8 x 5 m rolls
BITUSTIK™ 4000	150 mm x 12 m roll
Pak Adhesive	5 litre can
HYDRODUCT®	Refer to HYDRODUCT® Vertical Drainage Sheets datasheet

Equipment by Others: Lap Roller

Note: As per specification and/or local site requirements a low VOC, water-based primer BITUTHENE® Primer W2 can be used as an alternative to BITUTHENE® Primer S2.

PHYSICAL PROPERTIES

Property	8000	8000S
Colour	light grey	light grey
Application Temp	-5 °C to 20 °C	+15 °C to +35 °C
Resistance to hydrostatic head ASTM D5385	>70 m of water	>70 m of water

gcpat.uk | United Kingdom customer service: +44 (0) 1480 478421

We hope the information here will be helpful. It is based on data and knowledge considered to be true and accurate, and is offered for consideration, investigation and verification by the user, but we do not warrant the results to be obtained. Please read all statements, recommendations, and suggestions in conjunction with our conditions of sale, which apply to all goods supplied by us. No statement, recommendation, or suggestion is intended for any use that would infringe any patent, copyright, or other third party right.

ADCOR, BITUTHENE, BITUSTIK, PREPRUFE, and HYDRODUCT are trademarks, which may be registered in the United States and/or other countries, of GCP Applied Technologies Inc. This trademark list has been compiled using available published information as of the publication date and may not accurately reflect current trademark ownership or status.

© Copyright 2018 GCP Applied Technologies Inc. All rights reserved.

GCP Applied Technologies Inc., 62 Whittemore Avenue, Cambridge, MA 02140 USA.

In the UK, Ipswich Road, Slough, Berkshire, SL1 4EQ, UK

This document is only current as of the last updated date stated below and is valid only for use in the United Kingdom. It is important that you always refer to the currently available information at the URL below to provide the most current product information at the time of use. Additional literature such as Contractor Manuals, Technical Bulletins, Detail Drawings and detailing recommendations and other relevant documents are also available on www.gcpat.uk. Information found on other websites must not be relied upon, as they may not be up-to-date or applicable to the conditions in your location and we do not accept any responsibility for their content. If there are any conflicts or if you need more information, please contact GCP Customer Service.

Last Updated: 2018-08-24

gcpat.uk/solutions/products/bituthene-post-applied-waterproofing/bituthene-8000-8000s-membranes