

MS Fixer

1-component, caulk applied elastic MS-polymer adhesive.

Product Description

MS Fixer is a 1-component caulk applied MS-polymer based adhesive. MS Fixer cures into an elastic compound with very good adhesion to most construction materials.

MS Fixer is specifically developed as adhesive for the Colflex range of EPDM membranes.

Field of application

- Application of Colflex membranes.
- Sealing the edges of Colflex membranes.
- Gluing Bentorub® + and Bentorub® Salt bentonite strips to dry and moist substrates (See respective TDS).
- Gluing Swellseal 3V/8V waterproofing strips to dry and moist substrates (See respective TDS).
- Sealing joints between wall and slab.
- Sealing joints in slabs.
- As adhesive for steel and wood.

Application

- Remove dust, dirt, oils, greases and loose parts by brushing firmly. Remove all freestanding water. Although MS Fixer can be used on moist surfaces, there should be no running water in contact with the adhesive.
- Put the sausage in the empty tube of the caulking gun and cut 1 cm off the top of the sausage. Close the tube and install the nozzle. Cut the nozzle diagonally at the appropriate position.
- The optimum nozzle diameter is 10 mm.
- After application of MS Fixer, the adhesive is evenly distributed over the surface using a saw tooth spatula.
- For application of Colflex EPDM membranes, the adhesive thickness should be 2 mm.
- All material and equipment can be cleaned using solvent MEK before the adhesive has dried. Hardened MS Fixer needs to be mechanically removed.

Advantages

- Multi-purpose 1-component adhesive.
- Very good adhesion to most construction materials.
- MS Fixer can be applied to rough and moist surfaces.
- MS Fixer cures into an elastic rubber like compound.
- MS Fixer resist humid conditions during curing.
- Good overall chemical resistance.

- Solvent free.
- Easy to apply using a standard caulking gun.
- Good UV-resistance.

Appearance

MS Fixer is a grey coloured paste that cures into an elastic compound

Consumption

Needs to be estimated by the applicator and depends on surface roughness.

MS Fixer

- 225 g/m joint (Colflex 300 mm).
- 375 g/m joint (Colflex 500 mm).
- 1100 g/m joint (Colflex HN 100 mm)
- 1700 g/m joint (Colflex HN 200 and 250 mm)

Packaging

MS Fixer

- 400 cm³ sausages.
- 12 sausages per cardboard box.
- 96 boxes per pallet.

Storage

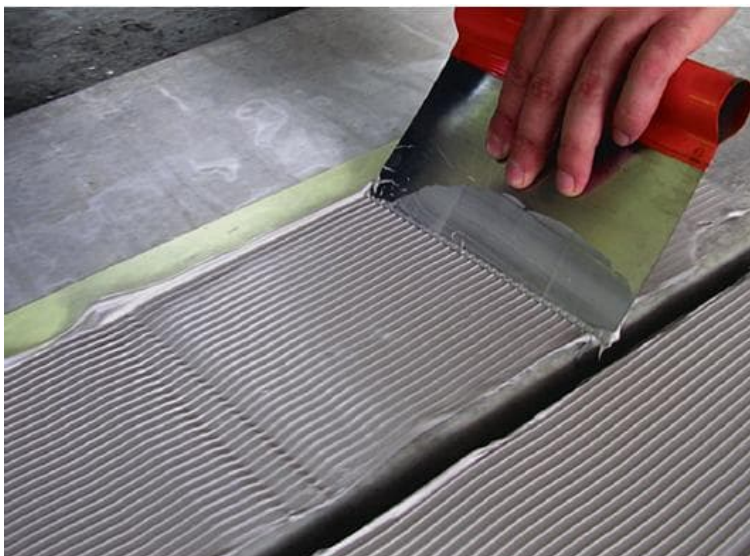
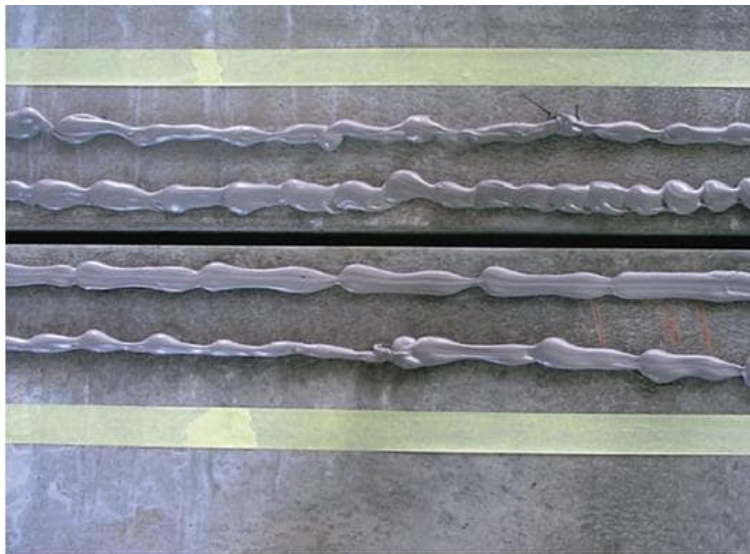
MS Fixer should be stored in a dry cool place. Storage temperatures should be between 5 °C and 30 °C.

Shelf life: 9 months

Accessories

To be ordered separately

- Caulking gun for sausages.
- Nozzle for caulking gun. (See respective Technical Data Sheets).



Health & Safety

MS Fixer contains amonisilane. Always wear rubber gloves and protective goggles. In case of splashes in the eyes, rinse abundantly with water and contact a physician.

For additional information, consult the relevant SDS.

Properties

PROPERTY	VALUE	NORM
Density	1.5 kg/dm ³	DIN 52451-PY
Skin forming (23 °C/50%RH)	± 30 min	
Curing (23 °C/50% RH)	3 mm/24h	
Volume change	< -3%	DIN 52451-PY
Tensile strength (100% elongation)	0.9 N/mm ²	DIN 52455 NWT-1-A2-100
Hardness Shore A	40	DIN 53505
Recovery	> 70%	DIN EN 27389-B-200
Maximum movement	15% in relation to the original application width	
Slump	< 2 mm	DIN 52454-ST-U 26-23
Temperature resistance	-40 °C to 80 °C	
Application temperature	5 °C to 40 °C	
Caulk speed	> 100 g/min	DIN 52456-6 mm

All test results shown in this data sheet are determined under laboratory conditions and with the product sample taken directly from stock in its original packing without any alteration or modification of its component parts.

gcpat.uk | United Kingdom customer service: +44 (0) 1480 478421

This document is only current as of the last updated date stated below and is valid only for use in the United Kingdom. It is important that you always refer to the currently available information at the URL below to provide the most current product information at the time of use. Additional literature such as Contractor Manuals, Technical Bulletins, Detail Drawings and detailing recommendations and other relevant documents are also available on www.gcpat.uk. Information found on other websites must not be relied upon, as they may not be up-to-date or applicable to the conditions in your location and we do not accept any responsibility for their content. If there are any conflicts or if you need more information, please contact GCP Customer Service.

Last Updated: 2020-04-21

gcpat.uk/solutions/products/ms-fixer