



CE n55Plus

CI/SfB

Tn6

L14143

November 2014

RIW GAS SEAL BLUE

Gas Seal Blue is a three-layer, low density polyethylene membrane with a polypropylene reinforcing grid.

BENEFITS

- ┌ Manufactured from virgin material, not recycled waste
- ┌ Separate damp proof membrane not required
- ┌ Robust jointing and sealing system
- ┌ Welded joints possible
- ┌ Single wound membrane with zero creases
- ┌ Two colour membrane for on-site quality control
- ┌ Complies with latest codes of practice as published by CIRIA and BRE

APPLICATIONS

- ┌ Combined ground floor damp proof membrane and gas barrier

APPLIED TO

- ┌ Sand blinding
- ┌ Suspended floors
- ┌ Ground bearing slabs

REMEMBER IT'S
waterproof RIW

RIW GAS SEAL BLUE

TYPICAL USES

Gas Seal Blue is typically used as a low density, polyethylene gas barrier and damp proof membrane.

The installed product protects the structure against moisture, radon, low level methane and carbon dioxide from the ground.

The product is suitable for use above or below ground bearing reinforced concrete slabs, and above suspended beam and block floors or precast concrete slabs.

DURABILITY

Subject to normal conditions of use Gas Seal Blue will remain effective against the ingress of water and water vapour, and will restrict the ingress of radon, low level methane and carbon dioxide during the lifetime of the building.

SPECIFICATION

J40 Flexible sheet waterproofing / damp proofing

Clause 140 Loose laid polyethylene gas retardant damp proofing.

Please consult RIW for further information.

INDEPENDENT AUTHORITY

Gas Seal Blue has been awarded a BBA Certificate No. 14/5146 covering its use as a low density, polyethylene gas barrier and damp proof membrane in concrete ground floors, above and below the slab not subject to hydrostatic pressure, to protect the building against moisture, radon, methane and carbon dioxide from the ground.



RIW Limited
Arc House, Terrace Road South, Binfield,
Bracknell, Berkshire, RG42 4PZ, England
13
0799-CPR-256

EN 13967:2004 & A1: 2006 High performance loose laid gas & damp proofing barrier.

Reaction to fire:	Class E
Watertightness	Conforming
Maximal tensile force MD/CMD	>420/>380
Joint strength MD/CMD	npd
Resistance to tearing:	>320/>330 N
Resistance to static loading:	>20 kg
Determination of resistance to impact:	npd
Durability (artificial ageing)	
- Resistance at elevated temperature:	Conforming
- Resistance to liquid chemicals:	Conforming

PERFORMANCE & COMPOSITION

Form	loose laid composite sheet	
Colour	blue/white	
Overall thickness	0.5mm	
Roll size	2m wide x 50m long*	
Weight	275g/m ² = 27.5kg/roll	
Laps	150mm	
Tensile strength	MD	500N/50mm
EN 12311-1	CD	470N/50mm
Elongation	MD	15%
EN12311-1	CD	20%
Nail tear resistance	MD	400N
EN 12311 -1	CD	400N
Radon permeability (m ² s ⁻¹ Pa ⁻¹)	1.5 x 10 ⁻¹¹	
Methane gas permeability (m ² s ⁻¹ Pa ⁻¹)	1.92 x 10 ⁻¹⁷	
Carbon dioxide permeability (m ² s ⁻¹ Pa ⁻¹)	1.64 x 10 ⁻¹⁶	

The above performance figures are typical values and should not be considered a product specification. *Other roll sizes available.

ANCILLARY PRODUCTS

RIW produce a range of ancillary products for use with Gas Seal Blue which include:

Gas Seal Tape - double-sided self-adhesive butyl tape for sealing between overlaps in the membrane.

Lap Tape - single-sided self-adhesive PVC tape for sealing edges of lapped product.

Lap Tape RB - reinforced single-sided self-adhesive bitumen tape for sealing edges of lapped product.

Preformed pipe collars - flexible collar for sealing around pipe penetrations.

Sheetseal GR - self-adhesive sheet membrane for gas resistant waterproofing applications.

Gas Seal GR DPC - gas resistant damp proof course/ cavity tray for building into masonry.

Geo-vent - cusped HDPE venting geo-composite incorporating geotextile to one side.

T connectors - geo-vent end connector incorporating 25mm slot for geo-vent.

Peri-vent sets - periscopic vent compatible with airbrick and geo-vent adaptor.

Pro-fleece - textile fleece for protection of applied gas membranes.

Gas cloaks - standard or bespoke cloak units to facilitate membrane application.

CONSTRUCTION

GENERAL

All construction should conform with the Building Regulations, Codes of Practice and British Standards in current use at the time the building is being constructed.

PREPARATION

The membrane should be laid on a smooth surface, free from voids, hollows and objects which may damage the membrane. If used below a ground bearing slab, the product may be laid on a sand blinding.

APPLICATION

The completed gas proofing system must cover the entire footprint of the building.

Gas Seal Blue should be unrolled onto the prepared surface, and be smoothed out as necessary. The product must be installed with the blue side uppermost.

Subsequent rolls should then be lapped onto the previous roll by 150mm, and be sealed using Gas Seal Tape placed centrally in the lap. Lap Tape should then be laid over the edge of the upper sheet, by 50mm, and be adhered down onto the lower sheet.

Pipe penetrations should be sealed using Preformed Pipe Collars; sealed to the membrane, and pipe using Gas Seal Tape and Lap Tape; see Pipe penetration detail.

Gas Seal GR DPC should be used to provide continuity through the walls, with Gas Seal Blue lapped and sealed onto it using Gas Seal Tape and Lap Tape as before.

Damaged areas should be patch repaired as necessary, using similar lapping/sealing details.

Gas Seal Blue will achieve 2 Points in accordance with BS8485 when installed by qualified specialists and independently validated. Where additional points are required, our Passive Venting System may need to be incorporated.

COMPATIBILITY TABLE

	BRE 211 Radon	CIRIA 665 Characteristic Situation 2	BS8485 Characteristic Situation 2	CIRIA 665 Characteristic Situation 3-6	BS8485 Characteristic Situation 3-6	NHBC Amber 1	NHBC Amber 2 & Red
Radon	YES	n/a	n/a	n/a	n/a	n/a	n/a
Carbon Dioxide	n/a	YES	YES	YES	YES	YES	YES
Methane	n/a	YES	YES	YES*	YES*	YES	YES*

* Suitable in some applications. Contact RIW Technical.

SPECIFIC USES

Gas Seal Blue should be installed with the ancillary products required, in accordance with current guidance for gas protection systems; including BRE211 / 414, CIRIA C665 & BS 8485.

SAFETY

Full health and safety instructions are contained on the product material safety data sheets, and these must be referred to before use.

SUPPLY

AVAILABILITY

All products can be obtained through Builders Merchants or approved stockists. A list of approved stockists is available from RIW's offices.

PACKAGING

Gas Seal Blue 2m wide x 50m long rolls

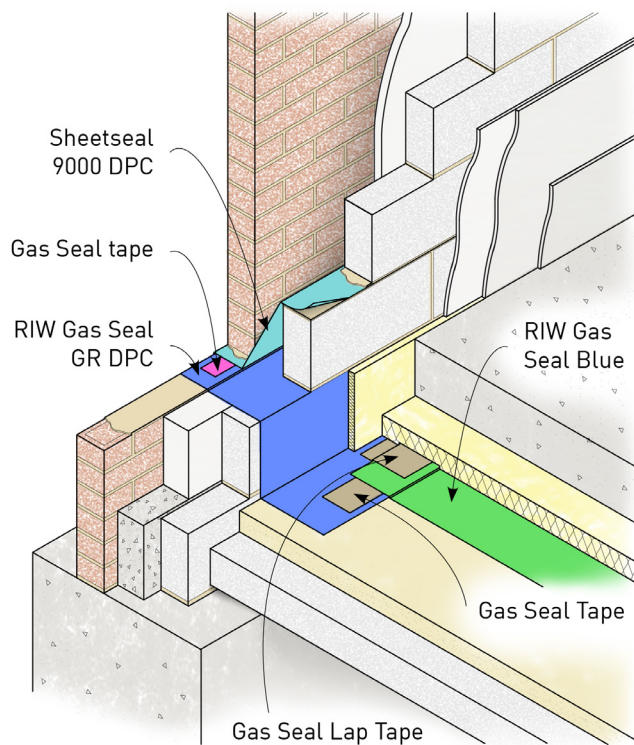
STORAGE

The rolls must be stacked on a flat surface, kept under cover and protected from sunlight and mechanical damage.

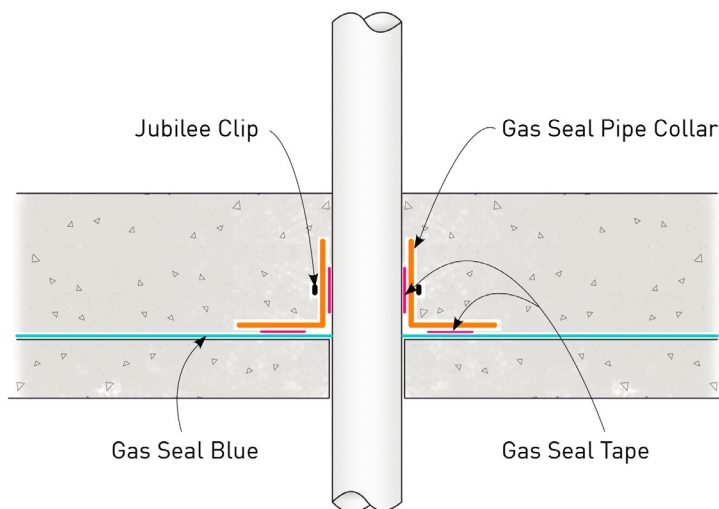
TECHNICAL SERVICES

The Technical Department is available to advise on individual projects and to prepare or assist in the preparation of specifications and drawings. We can also offer design guidance to satisfy the requirements of BS8485 and CIRIA C735.

A list of experienced applicators of our materials is available from RIW's offices, along with a list of independent consultants providing validation and integrity testing services.



Typical Ground Bearing Slab



Pipe Penetration Detail

The information in this literature was correct at the time of going to press. However, we are committed to continually improving our products and reserve the right to change product specifications.

For the latest information, please consult RIW. Conditions of use are beyond our control, therefore we cannot warrant the results to be obtained.

RIW

Arc House, Terrace Road South, Binfield,
Bracknell, Berkshire, RG42 4PZ

Technical enquires tel: **01344 397777**

Commercial enquires tel: **01344 397788**

www.riw.co.uk

REMEMBER IT'S
waterproof **RIW**