

+44 (0) 1772 450 950

info@flexcrete.com

www.flexcrete.com



## Solutions for Roofing Protection

### ROOFDEX HB



## Liquid Roofing Technology

Waterproofing the roof is one of the most important structural requirements of any building, as a watertight roof performs a vital function in protecting employees, visitors and physical assets.

**At Flexcrete, our heritage is based on the development of industry-leading waterproofing technology and in recent years, we have invested heavily in the introduction of state-of-the-art, cold fluid applied roofing materials.**

### Roofdex HB for Modern Construction

**Roofdex HB** is a revolutionary high build, waterborne liquid roof coating. It is suitable for both roof refurbishment and new build projects, and is also compatible with a wide range of flat or pitched roofs including asphalt, felt and cementitious substrates.

**Roofdex HB's** technically advanced, vapour permeable formulation provides outstanding performance in some of the world's most hostile conditions. It is elastomeric in nature and able to tolerate both thermal and structural movement and extreme temperatures without degrading.

### Simple, Safe, Rapid Application

**Roofdex HB** is also completely odourless and environmentally friendly with ultra-low VOC levels, meaning that no hazardous solvents are released and no disruption is caused to activities in the underlying building during application. In addition **Roofdex HB** poses no fire risks as it also achieves the highest possible fire rating of EXT.FAA when tested to BS 476: Part 3:2004.

### Sustainable Roofing

**Roofdex HB** is available in a range of colours including solar reflective white to reduce energy consumption by lowering heat gain from direct sunlight in summer and minimising heat loss in winter.

Furthermore, as environmental sustainability becomes more of a concern globally, **Roofdex HB's** inherent root resistant properties mean that it can be effectively incorporated as the waterproofing membrane of a green roof system.

## Versatile Design Options

**Roofdex HB** is UK manufactured and has been designed to offer versatile performance. A range of **Roofdex HB** systems can be created to suit particular specification requirements, including:

- Full built-up warm roofs
- Economical roof overlays
- Inverted roofs and podium decks
- New build and refurbishment
- Pitched roof waterproofing
- Green roofing systems



Typical green roof system, incorporating a Flexcrete waterproofing membrane.

## Roofdex HB in Action

**Roofdex HB** is a vapour permeable, styrene acrylic coating which is virtually odourless on application and inherently protected against biofilm attack. It is resistant to water ponding and remains flexible throughout its long service life on flat or pitched roofs. The high build, thixotropic nature of **Roofdex HB** is ideal for embedment of reinforcement and allows for treatment of upstands and other roof details without slumping.



### ► Complex Waterproofing of Details

#### PROBLEM:

Existing roof has degraded due to the aggressive effects of weathering. Complex detailing requirements mean that specifying effective waterproofing can be particularly challenging.

#### SOLUTION:

**Roofdex HB** offers quick and effective application. It is easily applied by roller, brush or airless spray in a cold, fluid form to form a completely seamless, waterproof membrane. Exceptional UV resistance helps ensure that the product will provide outstanding protection for up to 20 years.



Roofdex HB is compatible with a wide range of flat, pitched & curved roofs.

### ► Protecting Sensitive Areas

#### PROBLEM:

Ponded water on roofs can be a breeding ground for microorganisms and other bacteria. This can be particularly problematic where the roof is protecting a sensitive environment such as a hospital or school.

#### SOLUTION:

**Roofdex HB** contains state-of-the-art active biocide technology. Its active ingredients combat the growth of harmful bacteria and incorporate in-film protection, affording excellent resistance against algae and other biofilm attack.



Roofdex HB is supplied in a single pack, meaning no complex mixing on site.

## Performance Characteristics

**Roofdex HB** can be used unreinforced for the ultimate in cost-effective waterproofing, or it can be reinforced with various grades of glass fibre matting systems to provide long-term weatherproofing protection.

System	Coats	Min Coverage	Reinforcement	Elongation	Tensile Strength	Curing Times/Coat
Solar Reflective Waterproofing	2 coats	0.75 litres/m <sup>2</sup>	Unreinforced	500%	0.68MPa	1-12 hours
Weatherproofing 10 Years	2 coats	1.25 litres/m <sup>2</sup>	Cemprotec GFM 100	10%	5.45MPa	2 hours - overnight
Weatherproofing 15 Years	2 coats	1.75 litres/m <sup>2</sup>	Cemprotec GFM 225	5%	16.60MPa	4-24 hours

## Roofdex HB Warm Roof Build Up

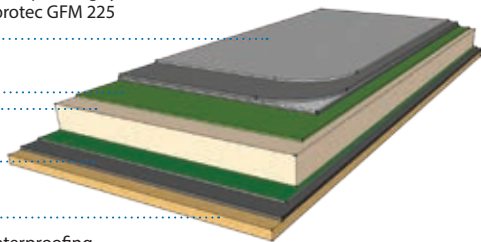
**Roofdex HB** 2 coat waterproofing system reinforced with Cemprotec GFM 225

Preparation Layer

Thermal Insulation

Vapour Control Layer

Substrate/Existing Waterproofing



## Roofdex HB Inverted Roof Build Up

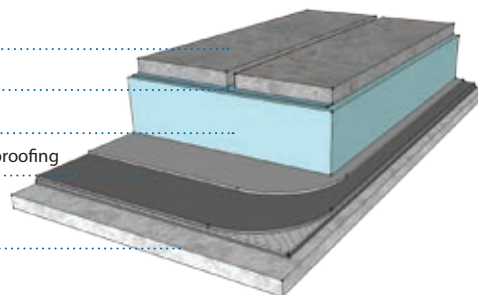
Paving / Ballast

Separating / Filter Layer

Inverted Roof Insulation

**Roofdex HB** 2 coat waterproofing system reinforced with Cemprotec GFM 225 (onto preparation layer)

Concrete Deck



Structural Repair & Protection Technology from Flexcrete

- Concrete Repair & Protection
- Protective Coatings
- Structural Waterproofing
- Enhanced Durability for Concrete & Steel
- Waterproofing of Roofs & Floors

**Flexcrete Technologies Ltd** Tomlinson Road Leyland PR25 2DY United Kingdom  
**Technical Helpline: +44 (0)1772 450 950 / Email: [technical@flexcrete.com](mailto:technical@flexcrete.com)**

[www.flexcrete.com](http://www.flexcrete.com)

Members of the

