



# *Steintec*<sup>®</sup>

high performance paving mortars

## Domestic Utility Paving Mortars Installation Guide & Accessories

PAVING INSTALLATION AS SIMPLE AS

**1**

BEDDING

**2**

BONDING

**3**

JOINTING

# Contents

## Domestic Utility / Landscape Range

<b>tuffbed</b>	- Pre-blended Bedding Mortar .....	2
	- Application .....	3
<b>tuffbond Utility</b>	- Bonding and Priming Mortar .....	4
	- Application .....	5
<b>tuffjoint Utility</b>	- Brush-In Grout .....	6
	- Application .....	8
<b>tufftop Utility</b>	- Jointing Mortar .....	10
	- Application .....	12
<b>tufffix - High Performance Paving Repair Mortar</b>	.....	14
	- Application .....	16
<b>Tools &amp; Equipment</b>	.....	17
<b>Weiss - Pavement Care</b>	.....	18

## Other High Performance Products

<b>tuffgrit - Unbound Permeable Aggregate</b>	.....	20
	- Application .....	21

## Commerical Mortars

- tuffbed 2-pack .....	22
- tuffbond & tufftop .....	23
- tuffflow .....	24
- tuffset G & tuffset 60 .....	25



# About Us

The UK's leading supplier of high performance paving mortars.

Supplying the commercial and domestic markets.

We have many years experience nationally and internationally, contributing to projects with outstanding longevity and visual appeal. We recognise that paving projects represent a major investment to all involved so we're committed to helping ensure the outcome for every project is a success.

## Technical Advice, Sales and Support

In preparation for construction, we will brief contractors and layworkers on specific mixing, laying requirements, techniques, tips and tricks, tools and equipment and logistical issues. Our advice will help save time and money on site. During construction we can provide on-site assistance and layworker training specific to the unique requirements of your project.

We offer this valuable technical support free, because Steintec are as keen as you are to be associated with successful professional projects. Contact us at the earliest possible stage of your project and our experienced technical team will be delighted to assist you in any way we can.

**Web:** [www.steintec.co.uk](http://www.steintec.co.uk)

**Email:** [mail@steintec.com](mailto:mail@steintec.com)

**Telephone:** 0203 598 9800

**Address:** 1 Northwick Road  
Canvey Island, Essex  
SS8 0PU, UK



[www.steintec.co.uk](http://www.steintec.co.uk)

## Key Features

- Pre-blended bedding mortar
- Suitable for shallow bedding depth of 30-70 mm
- Helps prevent moisture related paving issues typically associated with conventional mortars
- Fully complies with BS 7533 type A & type B, BS 7533-101:2021 type 25 & type 35
- Suitable for heavily trafficked areas
- Compatible with all types of paving; granite, natural stone, concrete & porcelain units
- Suited to commercial and public realm projects

A high performance bedding mortar pre-blended for ease of use, in smaller scale commercial, public realm and domestic projects. tuffbed high performance bedding mortar is suitable for use in pavements constructed in concrete or natural stone paving units.



It is a requirement of BS 7533-101:2021 that proprietary bedding mortars meet all requirements of Table 9 and Annex C with a maximum capillary rise of 20mm. tuffbed meets the requirements of BS 7533-7:2010 and BS 7533-101 in all respects.

## Technical Specification

<b>Packaging</b>	Bag	<b>Working time</b>	40 min at 10°C 30 min at 20°C
<b>Packaging weight</b>	25 kg	<b>Working temperature</b>	≥ 3°C
<b>Bed depth</b>	30 - 70 mm	<b>Compressive strength (20°C)</b>	14 days: ~25 N/mm² 28 days: ~35 N/mm²
<b>Typical water used</b>	3-4 litres per 25 kg	<b>Storage life</b>	12 months from manufacture date
<b>Typical coverage</b>	15 mm: 27 kg/m² 30 mm: 54 kg/m² 50 mm: 90 kg/m²	<b>Compliance</b>	BS 7533-101:2021 Type 25
<b>Packages per pallet</b>	48		
<b>Pallet weight</b>	1,230 kg inc. pallet		



# Pre-blended Bedding Mortar



**Step 1**  
Clean paving units



**Step 2**  
Mix with water



**Step 3**  
Clean area



**Step 4**  
Place tuffbed  
bedding mortar



**Step 5**  
Brush on the  
bonding mortar



**Step 6**  
Bed unit onto  
tuffbed mortar



## Key Information

Add the water to achieve a mix consistency which should be sticky, but not wet and so that a ball can be formed in the palm of one's hand. Bonding mortar where required should be applied using a stiff brush. Allow 24 hours to set before walking on the paving.

For trafficked applications, where there is a concrete base present, a layer of tuffbond priming mortar should be applied to the concrete base before the mixed bedding mortar is put in place.

# tuffbond<sup>®</sup> Utility

## Key Features

- Creates the essential adhesion bond between bedding and the paving element.
- For small scale paved areas in; natural stone, porcelain, concrete and granite paving units.
- A 1–2 mm thick coat of tuffbond utility, enhances adhesion by 100%
- Polymer and resin free.
- Provides full BS 7533:101 compliance when used in conjunction with tuffbed Utility and tufftop Utility jointing mortar.

tuffbond Utility is a bonding and priming mortar used to enhance the adhesion bond between the paving units and bedding mortar and where present, between the bedding mortar and supporting concrete structure.



For ease of use tuffbond Utility has been packaged in pre-measured sachets contained in a reusable, recyclable tub. With individual sachets, only the required amount of tuffbond Utility is used and wastage is minimised.

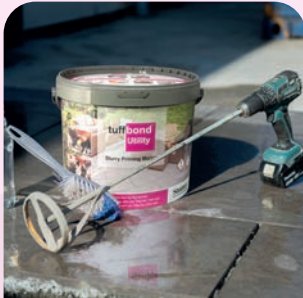
## Technical Specification

<b>Colour</b>	Grey	<b>Length of working time</b>	40 min at 20°C
<b>Packaging</b>	12 kg Tub (4x 3 kg Sachets)	<b>Working Temperature</b>	≥ 3°C
<b>Adhesion</b>	~2 N/mm <sup>2</sup>	<b>Packages per pallet</b>	48
<b>Consumption</b>	16 m <sup>2</sup> per tub (1 mm coat) 8 m <sup>2</sup> per tub (2 mm coat)	<b>Pallet weight</b>	606 kg inc. pallet
<b>Typical water used</b>	750 ml to 1 litre per 3 kg sachet	<b>Shelf life</b>	2 years from manufacture date
		<b>Compliance</b>	BS 7533-101:2021

# Bonding and Priming Mortar



## Step 1 Prepare Equipment



## Step 2 Wash underside of paving units



## Step 3 Add 750ml - 1L of clean water per sachet to the tub



## Step 4 Add sachet to the tub and mix



## Step 5 Brush apply 1-2mm thick coat to the paving unit



## Step 6 Place primed paving unit on bedding



## Key Information

Do **NOT** allow tuffbond Utility to dry, apply immediately prior to placing paving unit. When laying on an in-situ or reinforced concrete base, tuffbond Utility should also be applied to the clean surface prior to placing the bedding mortar.

tuffbond Utility is applied with a stiff brush to the entire underside of each paving unit.

## Key Features

- Brush in dry jointing mortar
- For smaller commercial, domestic, bound construction pavements, driveways and patios
- Four colours available; Flint, Anthracite, Hessian and Cream <sup>[1]</sup>
- For paved areas in; natural stone, porcelain, concrete and granite paving units
- Minimal maintenance required
- Supplied in 12.5 kg tubs with a coverage of up to 39 m<sup>2</sup>
- Polymer and resin free

This revolutionary cementitious brush-in grout is easy to use.

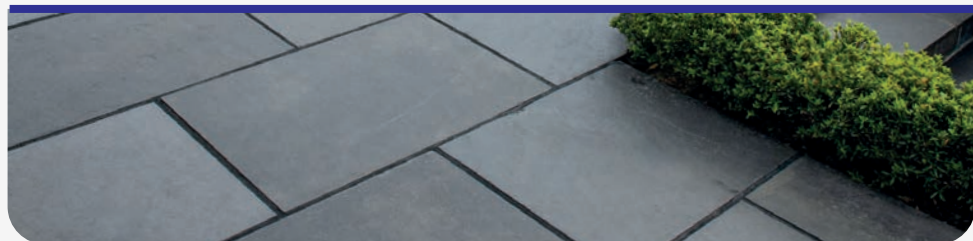
tuffjoint Utility has been produced and tested for easy use and for high quality, hard wearing jointing with no mixing required.

Sweep in the dry mortar using a soft rubber foam squeegee and/or a broom/brush.

When joints are full, remove dry excess tuffjoint Utility from the paving, and return to the tub.

Apply water using a hose set on a fine mist spray until water is pooling on the joint surface. Use a Washboy to clean the paving units.

The joints may need topping up after watering, as the water added will push the mortar into any voids in the joints. Pour mortar onto affected areas and repeat process.





# Brush-In Grout



www.steintec.co.uk/  
/tuffjointUtility/#video

## Technical Specification

Colour	Flint, Anthracite, Hessian and Cream <sup>[1]</sup>
Packaging	12.5 kg Tub
Joint width	>4 mm
Typical coverage	<a href="http://www.steintec.co.uk/Utility-calculator/">www.steintec.co.uk/Utility-calculator/</a>
Packages per pallet	64
Pallet weight	830 kg inc. pallet
Curing time	6 hours at 20°C
Working time	30 min at 20°C, once wet
Working temperature	≥ 3°C
Storage life <sup>[3]</sup>	2 years from manufacture date



<sup>[2]</sup> Pure cement based mortars are known to continue gaining strength over time, unlike resin and polymer based products that deteriorate over time.

<sup>[3]</sup> The content of soluble chromium (VI) is less than 2 ppm. Product performance is unaffected by age.

Paving unit size	Joint width	m <sup>2</sup> per (12.5kg) tub
800 x 800 x 16 mm	4 mm	39 m <sup>2</sup>
800 x 800 x 20 mm	4 mm	31 m <sup>2</sup>
600 x 900 x 20 mm	4 mm	28 m <sup>2</sup>
400 x 1200 x 20 mm	4 mm	23 m <sup>2</sup>
600 x 600 x 20 mm	4 mm	23 m <sup>2</sup>
600 x 900 x 20 mm	6 mm	19 m <sup>2</sup>
450 x 900 x 20 mm	6 mm	15 m <sup>2</sup>
600 x 1000 x 20 mm	8 mm	14 m <sup>2</sup>
600 x 900 x 24 mm	8 mm	12 m <sup>2</sup>
600 x 900 x 24 mm	10 mm	9 m <sup>2</sup>
600 x 600 x 24 mm	10 mm	8 m <sup>2</sup>
600 x 900 x 50 mm	10 mm	4 m <sup>2</sup>
600 x 600 x 50 mm	10 mm	3 m <sup>2</sup>



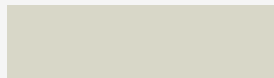
Flint



Anthracite



Hessian



Cream <sup>[1]</sup>

Online calculator available at [www.steintec.co.uk/Utility-calculator/](http://www.steintec.co.uk/Utility-calculator/)

N.B. colours are indicative only

<sup>[1]</sup> Cream Launching 2023

# tuff joint<sup>®</sup>

## Utility

### Step 1

Prepare  
Equipment



### Step 2

Pour out tuffjoint  
Utility on  
to the paving.



### Step 3

Spread the mortar  
into the joints.



### Step 4

Return dry excess  
to the tub for  
future use.



### Step 5

**Using a fine mist**  
spray, until water  
pools in the joints.



### Step 6

Clean using  
a Washboy or  
Washboy Pro Kit.



# Application

## Key Information

- **DO** use a fine mist spray of water to avoid dislodging the product.
- **DO** use the right equipment for the cleaning process. We can not stress enough the importance of using the right equipment for the cleaning process. i.e. Washboy with rollers and sponge float.
- **DO** check the weather forecast before installing. Cover paved area post installation if rain is forecast within 6 hours, to avoid any rain dislodging the mortar.
- **DON'T** install when raining or use on wet paving, excess water must be removed and paving allowed to dry.
- **CAN** use on damp porcelain paving, excess water must be removed. Natural stone must be dry.

Only use a soft foam rubber squeegee or a broom/brush to spread tuffjoint Utility. A hard rubber squeegee will not pull and push the mortar into the joints.

Diagonal swipes allow for the soft foam rubber squeegee to move the mortar without pulling mortar back out of the joints.

Only return dry unused mortar to the tub.

Use a fine mist to water the tuffjoint Utility until water is pooling on the joint surface, do NOT spray water directly into the joints or use a pressure washer as this will wash out the tuffjoint Utility.

The joints may need topping up after watering, as the water added will push the mortar into any voids in the joints. Pour mortar onto affected areas and repeat process.

Use flat diagonal swipes across the paving to remove remaining tuffjoint Utility from the surface. Clean the sponge float using the Washboy after each swipe.

Once all the excess tuffjoint Utility has been cleaned from the paving surface, leave to dry overnight.



# tufftop<sup>®</sup> Utility

## Key Features

- Self compacting jointing slurry mortar
- For smaller commercial, domestic, bound construction pavements, driveways and patios
- Four colours available; Natural Grey, Mid Grey, Dark Grey, Beige
- For paved areas in; natural stone, porcelain, concrete and granite paving units
- Complies with BS 7533:101
- Minimal maintenance required
- Polymer and resin free.

Convenient and easy to use jointing mortar.

Requires just 1 litre of clean water per 6 kg sachet added to the tub and mixed with a paddle mixer, to be ready to go.

Ease of use makes tufftop Utility ideal for smaller projects including driveways, pavements and patios.

tufftop Utility has been developed to make things as easy as possible for all users. Supplied in a reusable and recyclable tub.

The individual sachets in each tub ensure the correct amount of tufftop Utility is used and wastage is minimised.

The carefully measured contents of each sachet are mixed with exactly 1 litre of water.




# Jointing Mortar



[www.steintec.co.uk/tufftopUtility/#video](http://www.steintec.co.uk/tufftopUtility/#video)

## Technical Specification

<b>Colour</b>	Beige, Natural Grey, Mid Grey & Dark Grey	<b>Elastic modulus</b>	(20,000 ± 4,000) N/mm <sup>2</sup>
<b>Packaging</b>	12 kg Tub (2x 6 kg Sachets)	<b>Adhesive bond</b>	~1.5 N/mm <sup>2</sup>
<b>Joint width</b>	>4 mm	<b>Storage life</b>	2 years from manufacture date
<b>Typical water used</b>	1 litre per 6 kg sachet	<b>Compliance</b>	BS 7533-101:2021
<b>Typical coverage</b>	<a href="http://www.steintec.co.uk/Utility-calculator/">www.steintec.co.uk/Utility-calculator/</a>		
<b>Packages per pallet</b>	48		
<b>Pallet weight</b>	606 kg inc. pallet		
<b>Set time</b>	24 hours		
<b>Working time</b>	30 min at 20°C		
<b>Working temperature</b>	≥ 3°C		
<b>Compressive strength (20°C)</b>	7 days: ~20 N/mm <sup>2</sup> 28 days: ~25 N/mm <sup>2</sup>		
<b>Flexural strength</b>	~3.5 N/mm <sup>2</sup>		

Paving unit size	Joint width	m <sup>2</sup> per (12kg) tub
600 x 1200 x 20 mm	4 mm	27 m <sup>2</sup>
600 x 900 x 20 mm	4 mm	24 m <sup>2</sup>
600 x 600 x 20 mm	4 mm	20 m <sup>2</sup>
600 x 900 x 20 mm	6 mm	16 m <sup>2</sup>
600 x 900 x 24 mm	8 mm	10 m <sup>2</sup>
600 x 900 x 24 mm	10 mm	8 m <sup>2</sup>
600 x 600 x 24 mm	10 mm	7 m <sup>2</sup>
600 x 900 x 50 mm	10 mm	4 m <sup>2</sup>
600 x 600 x 50 mm	10 mm	3 m <sup>2</sup>

Online calculator available at [www.steintec.co.uk/Utility-calculator/](http://www.steintec.co.uk/Utility-calculator/)

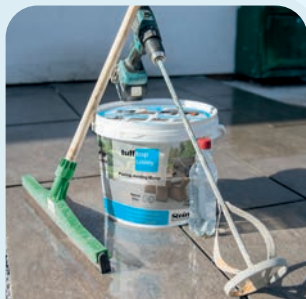


N.B. colours are indicative only



# tufftop<sup>®</sup> Utility

**Step 1**  
Prepare  
Equipment



**Step 2**  
Wash and wet  
paving & remove  
any pooling water



**Step 3**  
Add 1L of water  
per sachet to tub



**Step 4**  
Add sachet to tub  
and mix



**Step 5**  
Pour tufftop Utility  
over wet paving



**Step 6**  
Spread tufftop  
**Utility to fill joints**



# Application

## Step 7

Clean using a squeegee with water  
**and/or a sponge float**



## Key Information

It is important the pavement is entirely wet but not drenched, to aid application, the complete filling of the joints and the final cleaning process. Wipe away any pooling or standing water using a clean squeegee.

Do **NOT** let mortar dry on the surface, spray with a light mist to keep moist while applying & cleaning, if necessary. Do **NOT** drench the the paving with water while cleaning as this may cause colour pigments to be washed out of the joints.

**tufffix**<sup>®</sup>

## Key Features

- Economically extends life of old paving.
- Dramatically improves appearance.
- Quick and easy to apply.
- Saves time and money.
- Repairs cracked, broken and missing jointing mortar.
- Stabilises loose and rocking pavers.
- For all types of paving module; Setts, slabs, flags, blocks, etc.
- Paths, patios, pavements and driveways.

tufffix can rejuvenate old paving, giving it a new lease of life, alleviating the need to fully lift and re-lay.

Old paving, often laid on sand/cement, which has cracked and broken joints and rocking pavers can be renovated with tufffix.



The thick flowable slurry mortar fills voids and replenishes joints to provide a structural repair.

Three simple steps to replenish damaged paving with tufffix;

1. Remove all loose material from joints and thoroughly clean, ideally with a pressure washer.
2. Pour tufffix in to the joints.
3. Remove any excess using a sponge float.

Portions of the existing jointing mortar that are still sound and secure can be left in place and the tufffix applied over and around.

The longevity of a repair carried out with tufffix will depend on the condition and quality of the existing structure, how heavily it is trafficked, and how well it is prepared.

# High Performance Paving Repair Mortar



## Technical Information

Colour	Natural Grey
Packaging	Tub
Packaging weight	11 kg (2x 5.5 kg Sachets)
Joint width	>3 mm
Typical water used	1 L per 5.5 kg sachet
Packages per pallet	48
Pallet weight	558 kg inc. pallet
Set time	3 hours
Working time	15 min at 20°C
Working temperature	≥ 3°C

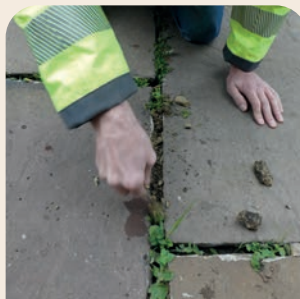
Compressive strength (20°C)	1 hr: ~27 N/mm <sup>2</sup> ; 24 hrs: ~50 N/mm <sup>2</sup>
Flexural strength	~7.5 N/mm <sup>2</sup>
Elastic modulus	(20,000 ± 4,000) N/mm <sup>2</sup>
Storage life	2 years from manufacture date
Compliance	BS 7533-101:2021



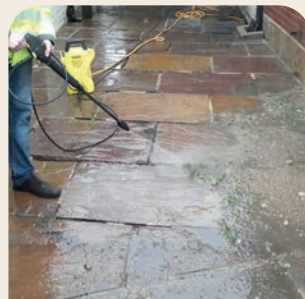
### Step 1 Prepare equipment



### Step 2 Remove organic material and loose jointing



### Step 3 Thoroughly prepare joints



## Key Information

It is important the pavement is entirely wet but not drenched, to aid application, the complete filling of the joints and the final cleaning process. Do **NOT** let mortar dry on the surface, spray with a light mist to keep moist while applying and cleaning, if necessary. Do **NOT** drench the the paving with water while cleaning as this may cause colour pigments to be washed out of the joints. Only mix and apply one sachet at a time. Do **NOT** mix more material than will be used within about 15 minutes at an ambient 20°C.

# Application

## Step 4

Add 1L of water  
per sachet used



## Step 5

Add sachet and  
mix



## Step 6

Pour mortar onto  
wet paving



## Step 7

**Spread mortar to fill joints and remove  
excess**



## Step 8

**Clean using a  
squeegee or  
sponge float**





# Tools & Equipment

While few special tools are required to use tuffbau's range of products, there are some that can make life easier and massively improve efficiency on site.

The range of products illustrated here is a selection of favourites based on our own experience and feedback from the trade.

## Mixing

### Paddle Mixers

The electric paddle mixer is ideal for the rapid, thorough and even mixing of many of our mortars.



## Cleaning & Hand Tools

### Washboy kit

The 23-litre bucket comes supplied with a sponge faced hand trowel. It is very simple to use and has an easy to clean double roller that sits on top of the bucket and makes light work of cleaning the sponge.



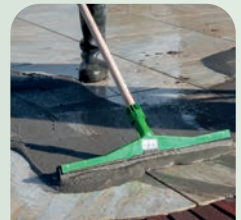
### Washboy Pro kit

The 24-litre bucket comes supplied with a sponge faced floor float. The long aluminium handle makes it easier to clean mortar from paving without constant bending.



### Soft Foam Rubber Squeegee

For the application of slurry grout. Designed to push materials into the paving joints, as well as removing surface residues.



# weoss®

## Pavement Care: Cleaning

Please contact our technical support team to check on product compatibility before purchasing.



### Professional Paving Cleaner

**Routine or soiled area paving cleaner**

All types of pavement surfaces.  
pH neutral and solvent free.  
Suitable for all types of natural stone and concrete pavements.



### Oil & Grease Stain Remover

**Removes deep and stubborn stains**

All types of paving surface.  
Removes BBQ grease, fat, candle wax, bitumen and oil stains.  
Apply gel, leave to dry and brush away dried gel along with the stain.



### CSR

### Cement stain remover

For most types of granite, acid-resistant natural stone & man-made paving.



### Rust Remover

### Rust stain remover

Removes rust stains from a variety of natural stone including granite and some sandstone.  
Inhibits new rust.



### Resin & Paint Remover

### Breaks down chemical marks and stains

Strips out old fashioned stone sealants, candle wax, polish, paints, graffiti and felt tip.  
Low-odour & VOC-free



### Sealant Remover

### Removes impregnators and colour enhancers

Remove superficial colour intensification.  
Lacquer residues cleaned from paving.  
Concentrated, highly alkaline cleaning agent.

# Pavement Care: Protection

Sizes for Weiss products range from 150 ml samples to 10 L containers.



## Stain Protect Pro

### Protecting paving from staining

Provides excellent protection for natural stone and pre-cast concrete  
Helps stop stubborn pavement grime.



## Colour Enhancer

### Wet look paving protection

Provides stain protection.  
A rained on / wet look all year round without the gloss shine.  
No change to surface structure or slip resistance.



## Install Protect

### Pre-construction protection impregnator

Protects against on site contaminants.  
Applied to upper side before laying.  
Safer and easier jointing.



## Organic Stain Remover

### Plant and organic residue remover

Quickly removes and helps prevent algae and moss stains.  
Contains Bleach.



## Algae & Moss Treatment

### Moss and algae cleaning

Concentrate; mix with water. Chlorine free.  
Removes and helps prevent algae and moss stains.  
Continues to work for weeks after application.

## Key Features

- Water permeable (SuDS)
- 2-6 mm natural aggregate
- Available in 25kg bags or ~850 kg bulk bags
- Highly durable
- As described in EN 13242
- Complies with BS7533-101:2021

A crushed igneous rock aggregate suitable for use as the laying course material for conventional unbound modular pavements and as the laying course and jointing material in SuDS permeable unbound modular pavements.

Applications include driveways, public realm, commercial areas, patios and pavements using any paving units.

tuffgrit is blended for optimum interlock of the angular particles, actively extending the durability of unbound/flexible pavements.



## Technical Specification

<b>Colour</b>	Grey	<b>Packages per pallet</b>	40 bags or 1 Bulk bag
<b>Packaging</b>	Bag or Bulk bag	<b>NBS sections</b>	Q24 Q25
<b>Aggregate size</b>	2-6 mm	<b>Compliance</b>	BS7533-101:2021
<b>Joint width</b>	8+ mm		
<b>Packaging weight</b>	25 kg or ~850 kg (dry weight)		
<b>Pallet weight</b> (inc. pallet)	1,030 kg (bag) ~880 kg (bulk bag)		

# Permeable Aggregate

Clay pavers and concrete blocks  
with nibs > 5 mm

**Step 1**  
Screed tuffgrit  
and compact  
bedding before  
laying units



**Step 2**  
Units laid  
touching



Cropped Setts

**Step 1**  
Spread loose  
tuffgrit bedding



Cropped Setts

**Step 2**  
Tap setts down  
tightly together  
and to level



All

**Step 3**  
Sweep tuffgrit  
into joints



**Step 4**  
Compact and  
repeat steps 3 & 4  
until joints are full

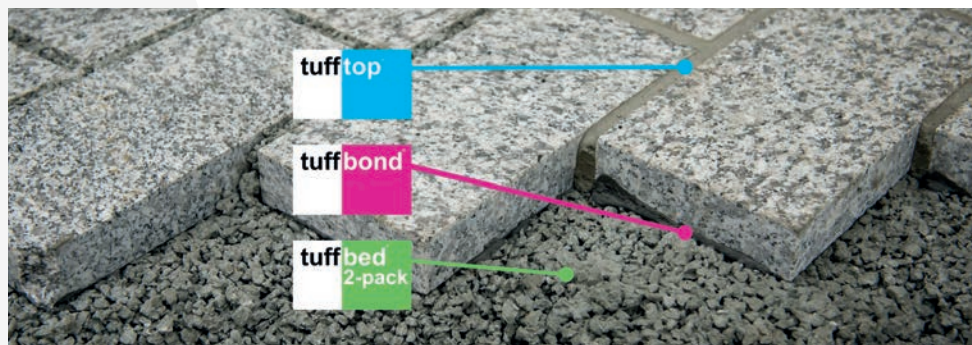




# Commerical Mortars

Steintec's range of high-performance products has been developed to provide complete bedding and jointing solutions. All our commerical mortars achieve full compliance with the BS7533-101:2021 Standard for modular paving.

More information on these mortars can be found on our website; [www.steintec.co.uk](http://www.steintec.co.uk)



## High Performance Permeable Low Carbon Bedding Mortar

**tuffbed<sup>®</sup>**  
**2-pack**

High performance low carbon permeable bedding mortar.  
Mix with four bags of tuffgrit aggregate for high strength bedding.



- Fully water permeable and frost resistant.
- Low carbon footprint  
(visit [www.steintec.co.uk](http://www.steintec.co.uk) for information).
- 40 min working time (10°C).
- 30-70 mm bedding depth.
- Helps prevent moisture related paving issues.
- Fully complies with BS 7533-101:2021 type 25 & type 35.
- Suited to commercial & public realm projects.
- Compatible with all types of paving; granite, natural stone, concrete and porcelain units.

<b>Colour</b>	Grey
<b>Packaging</b>	25 kg Bag
<b>Bed depth</b>	30 - 70 mm
<b>Typical water used</b>	4 litres per 125 kg batch
<b>Typical coverage</b>	30 mm: 60 kg/m <sup>2</sup> 40 mm: 80 kg/m <sup>2</sup> 50 mm: 100 kg/m <sup>2</sup>
<b>Packages per pallet</b>	40
<b>Pallet weight</b>	1,030 kg inc. pallet
<b>Working time</b>	40 min at 10°C, 30 min at 20°C
<b>Working temperature</b>	≥ 3°C
<b>Compressive strength (20°C)</b>	14 days: ~25 N/mm <sup>2</sup> 28 days: ~35 N/mm <sup>2</sup>
<b>Flexural strength</b>	~7 N/mm <sup>2</sup>
<b>Permeability</b>	~18 x 10 <sup>-4</sup> m/s
<b>Storage life</b>	12 months from manufacture

## High Performance Bonding and Priming

**tuffbond**

High performance bonding and priming.  
Essential adhesion bond between bedding and the paving element.



- Creates the essential adhesion bond between bedding and the paving element.
- Applied to supporting concrete structures.
- High resistance to shear forces and thermal stresses.
- Polymer and resin free.
- Provides full BS 7533 compliance when used in conjunction with tuffbed, tuffbed 2-Pack or tuffbed Utility and tufftop jointing mortar.

<b>Colour</b>	Grey
<b>Packaging</b>	25 kg Bag
<b>Adhesion</b>	~2 N/mm <sup>2</sup>
<b>Consumption</b>	~1.5 kg/m <sup>2</sup> per layer
<b>Typical water used</b>	6.75 litres per 25 kg
<b>Length of working time</b>	40 min at 10°C 30 min at 20°C
<b>Packages per pallet</b>	48
<b>Pallet weight</b>	1,230 kg inc. pallet
<b>Storage life</b>	12 months from manufacture

## High Performance Jointing Mortar

**tufftop**

High performance slurry jointing mortar.  
Extremely high durability and low maintenance.



- Self compacting jointing slurry mortar.
- Four colours available.
- Exceeds requirements of BS 7533-101:2021 for Type 25 & Type 40 jointing mortars.
- Compatible with all types of paving; granite, natural stone, concrete and porcelain units.
- Extremely high durability and low maintenance.
- Polymer and resin free.
- Easy to clean.

<b>Colour</b>	Beige, Natural Grey, Mid Grey & Dark Grey
<b>Packaging</b>	25 kg Bag
<b>Joint width</b>	>3 mm
<b>Typical water used</b>	4-5 litres per 25 kg
<b>Typical coverage</b>	<a href="http://www.steintec.co.uk/calculator/">www.steintec.co.uk/calculator/</a>
<b>Packages per pallet</b>	48
<b>Pallet weight</b>	1,230 kg inc. pallet
<b>Set time</b>	24 hours
<b>Working time</b>	30 min at 20°C
<b>Working temperature</b>	≥ 3°C
<b>Compressive strength (20°C)</b>	14 days: ~30 N/mm <sup>2</sup> 28 days: ~45 N/mm <sup>2</sup>
<b>Flexural strength</b>	~7.5 N/mm <sup>2</sup>
<b>Elastic modulus</b>	(20,000 ± 4,000) N/mm <sup>2</sup>
<b>Adhesive Bond</b>	~1.5 N/mm <sup>2</sup>
<b>Storage life</b>	12 months from manufacture

## Bound SuDS Permeable Jointing Mortar

**tuffflow**



High performance permeable bound jointing mortar.  
Water flows through the joints and bedding (tuffbed 2-pack).



- Greater choice for paving units (slabs, flags sets, blocks pavers, large format)
- Free of polymers and resin additives.
- Strong rigid jointing mortar for permanent installation.
- Maintenance, durability, trafficking / loading, versatility.
- Can be lightly jet washed and swept / brushed to keep clean and silt free to maintain aesthetics and permeability.
- Suitable for public spaces with heavy pedestrian traffic, vehicular overrun, domestic patios and driveways.
- No need to regularly top up joints.
- Low maintenance rigid/bound construction
- Lightweight blue / green roof construction

<b>Colour</b>	Dark Grey
<b>Packaging</b>	24 kg Bag (3 x 8 kg sachets)
<b>Joint width</b>	>10 mm
<b>Typical water used</b>	1 litre per 8 kg sachet
<b>Typical coverage</b>	<a href="http://www.steintec.co.uk/calculator/">www.steintec.co.uk/calculator/</a>
<b>Working time</b>	30 min at 20°C
<b>Working temperature</b>	≥ 3°C
<b>Compressive strength (20°C)</b>	28 days: ~25 N/mm <sup>2</sup>
<b>Storage life</b>	12 months from manufacture
<b>Compliance</b>	BS 7533-101:2021 type 25



## Specialist Rapid Mortar

### tuffset G

Specialist multi-purpose paving mortar. tuffset G can be used for top to bottom reinstatement of an entire paving structure.



- Ready for heavy traffic within 3 hours.
- 30-70 mm bedding depth.
- Multi-purpose: bedding, priming, jointing, emergency repairs & filling around gully and manhole frames in carriageways.
- Available in three colours.
- Free of chemical admixtures, polymers and resins.
- Exceeds the requirements of BS7533-101:2021 for bedding, bonding and jointing.

<b>Colour</b>	Natural Grey, Mid Grey & Dark Grey
<b>Packaging</b>	25 kg Bag
<b>Bed depth layer range</b>	30 mm - 70 mm
<b>Joint width</b>	>3 mm
<b>Packages per pallet</b>	48
<b>Pallet weight</b>	1,230 kg inc. pallet
<b>Set time</b>	3 hours
<b>Working time</b>	15 min at 20°C
<b>Working temperature</b>	≥ 3°C
<b>Compressive strength (20°C)</b>	(1:1 mix) 1 hr: ~27 N/mm <sup>2</sup> ; 24 hrs: ~50 N/mm <sup>2</sup>
<b>Flexural strength</b>	~7.5 N/mm <sup>2</sup>
<b>Elastic modulus</b>	(20,000 ± 4,000) N/mm <sup>2</sup>
<b>Adhesive Bond</b>	~3 N/mm <sup>2</sup>
<b>Storage life</b>	12 months from manufacture

## Sixty Minute Multi-Purpose Rapid Setting Mortar

### tuffset 60

A supportive high performance mortar for the placing and levelling of iron works and street furniture in carriageways and pavements.



- Rapid setting (60 minutes) and strength gain.
- 20 minute working time.
- Placing and levelling of ironwork in areas of heavy traffic.
- Durable solution for emergency works.
- Frost resistant & highly durable.
- Higher performance alternative to sand and cement mixtures.
- Polymer and resin free.

<b>Colour</b>	Grey
<b>Packaging</b>	25 kg Bag
<b>Bed depth</b>	10 - 50 mm
<b>Typical water used</b>	3 litres per 25 kg
<b>Typical coverage</b>	40 mm: 90 kg/m <sup>2</sup>
<b>Packages per pallet</b>	40
<b>Pallet weight</b>	1,030 kg inc. pallet
<b>Set time</b>	1 hour
<b>Working time</b>	20 minutes
<b>Working temperature</b>	≥ 3°C
<b>Compressive strength (20°C)</b>	1 hr: ~25 N/mm <sup>2</sup> ; 3 hrs: ~30 N/mm <sup>2</sup> ; 24 hrs: ~40 N/mm <sup>2</sup>
<b>Storage life</b>	12 months from manufacture date





# *Steintec*<sup>®</sup>

high performance paving mortars

Your *Steintec*<sup>®</sup> Stockist is

Email: [mail@steintec.co.uk](mailto:mail@steintec.co.uk)

Web: [www.steintec.co.uk](http://www.steintec.co.uk)

Phone: 0203 598 9800

1 Northwick Road  
Canvey Island  
Essex  
SS8 0PU  
UK

Version 2.02

Steintec is a trading brand of tuffbau Ltd.

Registered in England No. 4376956 - Registered Office: 1 Northwick Road, Canvey Island, Essex, SS8 0PU, UK