

Product Overview



resapol[®]

www.resapol.com

 **rbs**
SPECIALITY PRODUCTS



Injection Resin LV Kit



Cracks in concrete and masonry can occur due to many different reasons including, but not limited to, shrinkage, overloading, environmental factors and corrosion. These cracks can weaken the overall structure of buildings and over time they can widen, compromising the load bearing capacity and potentially leading to structural failure. These cracks can also allow water to penetrate which can lead to moisture related issues. A proper repair of the crack prevents water infiltration, improves the aesthetic appeal and extends the lifespan of the concrete and masonry structures all while avoiding costly replacements in the future. This can also help reduce the environmental impact associated with replacement.

For this reason, we are pleased to introduce the brand new rbs Injection Resin LV Kit; specially formulated as a two component, low viscosity, fast curing epoxy sealing system for repairs to cracks in concrete and solid masonry.

Areas of Use

- Low pressure injection of cracks in concrete and solid masonry
- Gravity feed of cracks in horizontal concrete and horizontal masonry
- Fast repairs to concrete and masonry cracks
- Suitable for walls and floors

Product Benefits

- Low viscosity, rapid curing crack sealer and epoxy-based injection resin
- As strong as concrete when cured
- Low viscosity, 100% solids epoxy
- No drilling required, no need to excavate
- Cartridges that fit into standard sealant guns
- Comes with convenient mixer nozzles for both the crack sealer and injection resin
- Perforated box to hold injection ports

WHO ARE RBS?

The rbs range is one of exceptional products, accompanied by the industry renowned Resapol training, technical help and delivery promise.

resapol[®]

www.resapol.com

Injection Resin LV Kit

WHAT EACH KIT CONTAINS




Each box contains the complete kit that comprises of:

Item	Quantity per kit
250ml Injection Resin	3
Mixer Nozzles	2
Applicator Fan	2
300ml Crack Sealer	2
Cartridge Outlet Plug	3
Injection resin mixers with extension tube	3
Push fit connector	1
Injection Ports	16
Pairs of gloves	2
Wooden Applicators	2



Injection Resin LV Kit



CRACK SEALER

-  For sealing concrete & masonry cracks
-  For fixing injection ports
-  Fast setting, provides a tight seal

OPENING & INJECTION TIMES

Temperature	Open Time	Injection Time
41°F / +5°C	18 mins	145 mins
50°F / +10°C	10 mins	85 mins
68°F / +20°C	6 mins	50 mins
77°F / +25°C	5 mins	40 mins
86°F / +30°C	4 mins	35 mins

INJECTION RESIN

-  High performance epoxy resin formula
-  For use on vertical & horizontal cracks

OPEN & SETTING TIMES

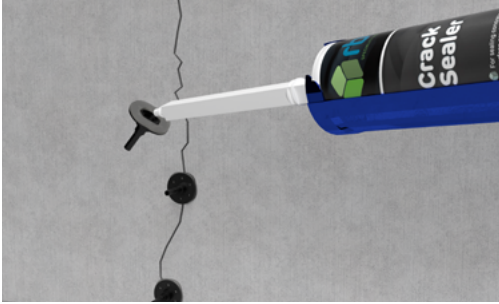
Typical pot life	25 - 30 minutes (60 gm mass) at 72°F / 23°C
Tack free time	3 hours at 72°F / 23°C
Typical cure time	12 hours at 68°F / 20°C



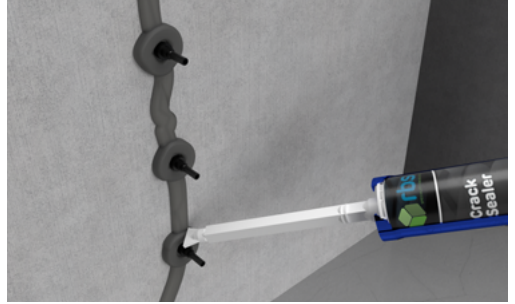
TOP TIP

Special care must be taken when using the material in very porous substrates, as it is likely to be absorbed by the substrate. This may result in a loss of volume in the material in the crack, leading to an unfilled crack.

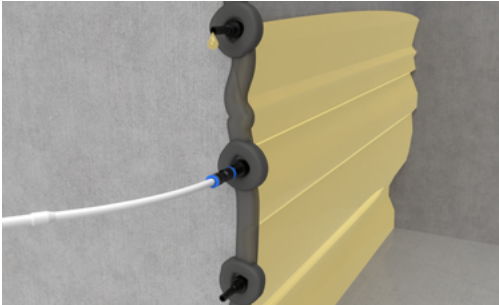




- Fit injection ports to the crack, spacing evenly using the rbs Crack Sealer.



- Seal the crack and around each of the injection ports with the rbs Crack Sealer.
- Allow to cure.



- Fit the rbs Injection Resin to the ports using the injection tube.
- Start the injection at the lowest port, repeating on the next port up when the resin reaches it, until the crack is completely full.
- Allow to cure.



- Use appropriate tools to fully remove all injection ports and rbs Crack Sealer.
- Make any final repairs to the surface of the concrete.



Step by step guide

Click on the below image to watch a more in depth step by step video guide to show how quick and easy it is to repair cracks in concrete and masonry.



resapol[®]

www.resapol.com



resapol[®]

Application Advice from Paul Rigby

Resapol National Technical Support Manager

HINTS AND TIPS FOR THE BEST POSSIBLE APPLICATION RESULTS

- Always wear eye protection and disposable gloves. This is a must!
- Assuming a crack is 1mm wide and 100mm deep a 1 litre of resin will fill a crack approximately 10m long. The choice of the type of injection resin will be dependent on the width of crack. Also it is important to ensure cracks are dormant.
- Always gently pump the resin through the mixer nozzle and hose ensuring not to exert too much pressure. If resistance is felt stop pumping immediately, otherwise excessive pressure may break the seal over the crack. Wait approximately 30 seconds and then reapply pressure; repeat this procedure 3 times. The resin should begin to exude from the next adjacent injection port fairly quickly.
- If it does not, move to the next port and pump resin until flowing resin is detected on the previous port then seal off the port and continue injection process.
- Always start at the bottom of the crack so air is displaced upwards as work proceeds.
- Allow 24 hours for curing of the injection resin, then the sealed injection ports may be broken off. Any depression or making good can then be carried out. To achieve a smooth finish to the surface, remove any crack sealer excess using a grinding wheel.
- Clean tools with a solvent based cleaner before the resin cures.

If you have any questions or need further advice please don't hesitate to contact Paul - prigby@resapol.com

resapol[®]

www.resapol.com

rbs
SPECIALITY PRODUCTS